

SPACES

KANSAS CITY

CELEBRATE
the SEASON!

OCT 2012

\$4.95



HOLIDAY HOMES
FESTIVE FEASTS
DAZZLING DIAMONDS
AND SO MUCH MORE!

inside

HOLIDAY 2012

FEATURES

116 Homes for the Holidays

The Kappa Kappa Gamma 2011 house tour sparked holiday creativity.

132 Ice Ice Baby

Could there be a more luxurious gift for the holidays than the crystalline sparkle of diamond and quartz jewelry?

140 Home Again

Two Kansas City design pros mastered the high/low mix in this modernist home.

150 Shades of Blue

Add shimmering silver and winter-white accents for the perfect holiday party.



DEPARTMENTS

- | | | | |
|----|------------------------|-----|------------------|
| 26 | Editor's Note | 86 | Art |
| 41 | My Favorite Object | 94 | Cookery |
| 42 | On the Agenda | 102 | Mind, Body, Soul |
| 50 | Inside Design | 162 | Taste |
| 58 | Destinations | 168 | Just a Bite |
| 66 | Essential Entertaining | 170 | Dining Guide |
| 72 | Hunters & Gatherers | 178 | About Town |
| 80 | Chic | 192 | Inside Back |

ON THE COVER

In celebration of DIFFA's Holidays by Design, Brian Morley of B + I Design (Bergamot & Ivy) crafted a romantic wreath of Eastern Red Cedar, mullen leaves, dusty miller, silvered mossy-cap acorns and exotic green cymbidium orchids.

PHOTOGRAPHED BY AARON LEIMKUEHLER

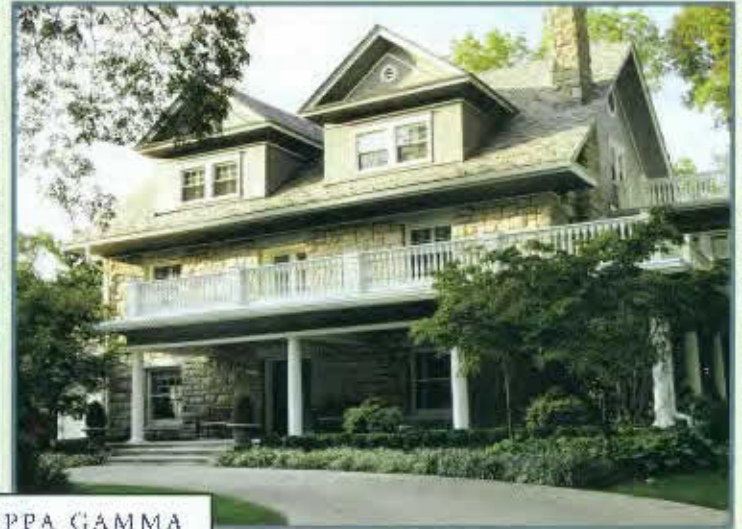
KAPPA KAPPA GAMMA

61st Annual Holiday Homes Tour

December 4th 4:00pm-8:00pm and December 5th 10:00am-8:00pm



Mark and Melissa McJungals
5/36 Jerry St
Kansas City, MO
Decorator: Craig Sate Designs



Jon and Kelly Lambert
800 W. 56th St
Kansas City, MO
Decorator: Trapp and Co.



Mike and Kerry Steinhuth
3455 W. 68th St
Mission Hills, KS
Decorator: Bergman & Son



Kevin and Ada Knick
8226 Nell
Prairie Village, KS
Decorator: Fiddly Fig

Tour proceeds will benefit:

CASA of Jackson County, Sheffield Place, The Children's Place, and The Kappa Kappa Gamma Foundation.

For more information: www.kckappas.com

Visit our Gift and Gourmet Shop located at Homestead Country Club, 6510 Mission Rd, Prairie Village, KS
Hours: Tuesday, December 4th 2pm-8pm; Wednesday, December 5th 10am-8pm

SPACES
KANSAS CITY
SPACEKCC.COM



Old World whimsy. “Whenever we work with a homeowner, it’s a collaboration,” says Sheryl White of The Fiddly Fig, who helped give the Mission Hills home of Steve and Erin Gorny a sense of humor. “I can truly say that this was one of our favorites—ever. Their home had a lot of antiques and a vintage feel, but with a definite whimsy.”

With a backdrop of framed antique maps, a table centerpiece of white kale, Bosc pears, grapes, bay leaves, peppercorn and winter greens also features fruit with a touch of gold. White and her crew

Above: Fresh greens accented with vintage spoons and bells envelop the chandelier of the breakfast room.

Opposite: In the dining room, horriboned swags of red peppercorns and greens are hung from the backs of the chairs, while a collection of silvery ornaments cascade from the lantern.





Above: A fireplace makes the screened-in porch usable almost every month of the year, so it gets longue-in-cheek decor too. *Opposite:* In the comfy, traditional living room, classic evergreen wreaths hang from the French doors that lead to the sunporch, announcing the ceiling-scraping tree that's laden with ornaments within.

gestooned the chandelier with peppercornies, vintage spoons and bells hung with ribbon.

French doors open from the living room to a dazzling tree on the sunporch. And even more awaits on the rugged outdoor porch. Red long johns, a "Be Nice or Leave" sign, and burlap ribbons on the tree suggest a family that likes to have fun.

"Just like we did with the long johns, use what you have, pull it out and put it different places," suggests White. "Instead of labeling your boxes 'front door wreath,' 'side porch arrangement' and so on, rework the old to give it a fresh look."



